

The world's first Windows collaboration display created in partnership with Microsoft



Collaboration is critical to modern business success, so choosing the right tools to increase productivity and collaboration in the workplace are essential.

As workplace focus moves from 'me-centric' to 'we-centric' work, technology such as large format interactive displays provide the ideal platform to support team working, whether together collaboratively at the display or bringing people together in dispersed locations, enabling effective collaboration and improving employee engagement as a result.

Windows collaboration displays by Avocor represent the next generation of interactive displays', answering some of the common problems faced by users daily while seamlessly delivering the power and productivity of Office 365 and Microsoft Teams into the meeting space.



Windows collaboration displays by Avocor are created in partnership with Microsoft to enhance the meeting experience.

With the average meeting taking around 10 minutes to get started, Avocor's WCD uses a single-cable solution enabling users to connect their laptop to the display quickly. The cable transmits 4K video, touch, USB control, internet and power for fast frustration-free use. Smart switching makes multiple-user collaboration quick and straightforward.

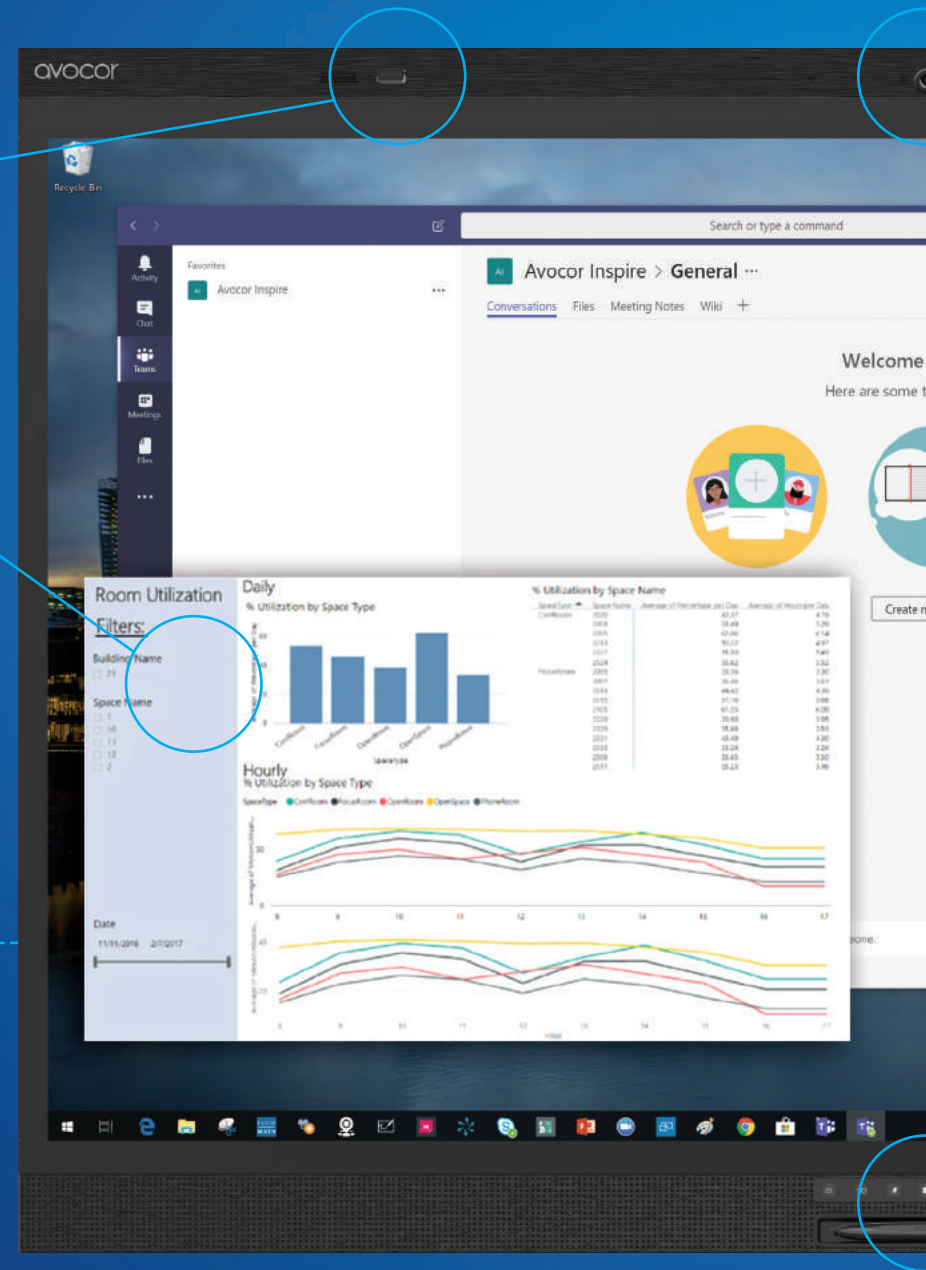
This all-in-one integrated solution combines a premium conference camera, stereo speakers and an active, far-field microphone array to create a video collaboration environment. Uniquely, Windows collaboration displays by Avocor include in-built, IoT sensors that connect to the Microsoft Azure Digital Twins platform measuring environmental data such as room temperature and light levels to provide intelligent data for facilities managers.

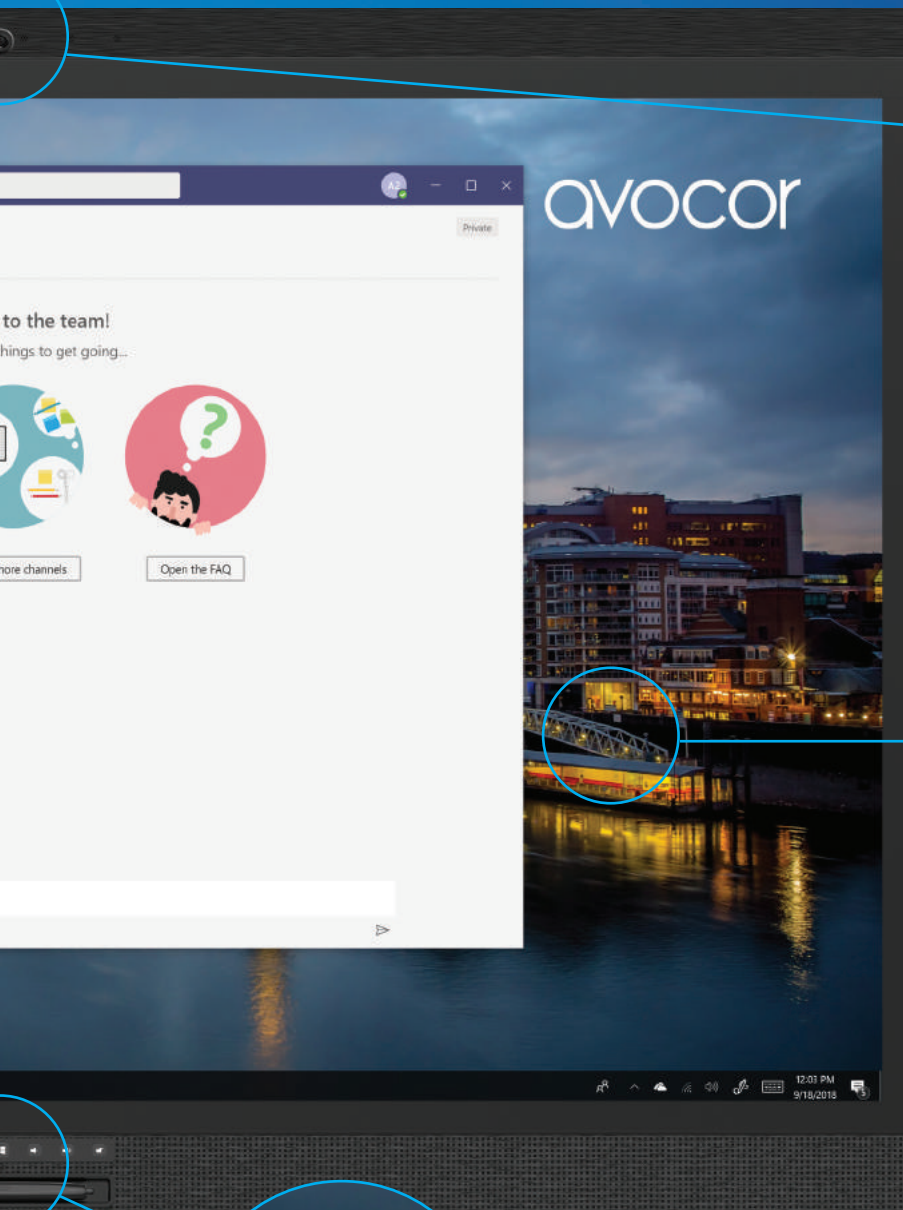


In-built sensors that connect to the Microsoft Azure IoT Digital Twins platform enable organizations to measure environmental data such as room temperature to improve facilities and meeting ROI



A single USB-C cable delivers a frustration-free user experience when getting meetings started with no more struggling to find image sources or connect additional cables. The cable also provides hardwire Internet access, powering the connected device at the same time





The integrated, Full HD conference camera, stereo speakers and active, far-field microphone array create the ideal video collaboration environment for the meeting space



4K screen resolution combined with the latest generation of InGlass™ touch technology delivers an exceptionally smooth, responsive touch experience that is pixel-perfect



Front of display control buttons allow for instant control of the display and includes a dedicated Windows key to access your documents quickly and easily



“The new Windows collaboration displays by Avocor will make teamwork easier and more efficient by making it possible for people to extend their PC experience and applications like Microsoft PowerPoint, Teams and Whiteboard to a large interactive display that has been designed from the onset to be fully compatible and easy to use.”

Ruston Panabaker,
Vice President IoT Solutions - Microsoft

DISPLAY	
Diagonal size (inch)	65
Backlight	Direct LED
Aspect ratio	16:9
Resolution	4K, 3840 x 2160 @ 60Hz
Brightness	370 (cd/m2)
Viewing angle	178/178
Supported colors	30-bit deep color
Display orientation	Landscape
TOUCH SYSTEM	
Interface	1 x USB Type C, 3 x USB-B 3.0
Touch	Up to 20-point InGlass™ Intelligent Touch Support up to 4 x fine-tip stylus with eraser Simultaneous pen and touch*
Glass	2mm optically bonded, anti-glare, anti-fingerprint glass
Supported Operating System	Windows 7/8/10 Mac OSX Linux
AUDIO	
Built-in speakers	Stereo - 2 x 30W
Microphone array	4 x beam-forming, linear array, far-field, SSP, AEC, ANS, DRC, EQ
CAMERA	
Integrated conference camera	6 element aspherical glass lens, Full HD Sony CMOS, AE/AWB,AF,AGC,WDR, super-wide 120° FoV
CONNECTIVITY	
Standard I/O	Type C (DisplayPort Alt mode, 4K 60Hz, USB HID, PD power, ethernet), 1 x DisplayPort, 2 x HDMI, 3 x USB-B 3.0, 1 x USB-A 3.0 HID
Audio	1 x 3.5mm audio out, 1 x optical (SPDIF)
Control	1 x RS-232, 1 x IR input
Ethernet	2 x RJ-45
PHYSICAL SPECIFICATIONS	
Product dimensions	1586(W) x 1039(H) x 111.5(D) mm 62.5(W) x 40.9(H) x 4.4(D) inch
Shipping dimensions	1695(W) x 1237(H) x 520(D) mm 66.7(W) x 48.7(H) x 20.5(D) inch
Weight	55kg 121lbs
VESA wall mounting points	600 mm x 400 mm 23.6 inch x 15.7 inch
IPC mount	75 x 75 mm 2.9 x 2.9 inch (included 100 x 100 xx adapter plate)
Handles	Yes
AZURE DIGITAL TWINS DATA	
Ambient room temperature	°F or °C
Room brightness	Lux
Proximity	Yes
WCD FUNCTIONS	
Auto-power detection	Yes, based on Proximity Sensor
Auto-source detection	Yes + Smart Switching
IOT data reporting	Yes + adjustable data telemetry interval
POWER	
Power supply	AC100-240V (Worldwide), 50/60Hz
Maximum power consumption	<220W
Standby	≤0.5W
ENVIRONMENTAL	
Operating temperature	0°C ~ 40°C
Storage temperature	-20°C ~ 60°C
Humidity	30% ~ 85%
WHAT COMES IN THE BOX	
1 x remote control & batteries, 2 x 2mm pen with eraser tip, Power cables (1 x US, 1 x UK, 1 x EU, 1 x Australia/NZ), 1 x USB-B 3.0 cable, 1 x HDMI cable, 1 x Type C cable, 5 x cable clips, 1 x VESA 75 x 75 / 100 x 100 adapter plate, 1 x quick start guide	
WARRANTY	
3 year advanced replacement warranty as standard. Please visit www.avocor.com/faq/avocor-global-warranty for region-specific details	

* application dependent. Avocor_WCD_Brochure_04.03.19



avocor
avocor.com